

Happier Trails.

FOR LEASING

Whiteside Properties
1300 S Mint St / Ste 400
Charlotte NC 28203

☎ 704 347 4676
whitesidecre.com
Insta @whitesidecre

Brooks Whiteside
brooks@whitesidecre.com
C 704 763 9855

Bryn Knudson
bryn@whitesidecre.com
C 440 554 5458

OVERVIEW

Lintmen's is a workspace, food hall and backyard inspired by the tight-knit friends, families and neighbors that built our thriving community. Walking distance from NoDa Arts District, we're easy to find. With the XCLT trail at our feet and the light rail around the corner, we're even easier to get to. Whether you're coming, going or somewhere in between, drop by. We're always ready for company.

ADDRESS

2315 N Davidson St
Charlotte NC 28205

NEARBY

Tucked in between NoDa, Villa Heights and Optimist Park, Lintmen's has great neighbors including restaurants, breweries and parks. And it's easy to get to—just a ¼ mile from the 25th St. Station.

LOCATION



LINTMEN'S

Every good workday starts with a nice commute.

History has come a long way to meet you here—and for good reason. This workspace was built for teams made to create, both then and now. Exposed brick, natural light and bow-truss ceilings make way for collaborative and independent thought. Plus, getting here is half the fun. By rail, wheel or foot, with the 25th St. LYNX Station nearby and XCLT trail running through our backyard, there are all sorts of paths to kick your workday off right and keep yourself moving.



So many ways to make your taste buds sing.

With Seoul Food Meat Co., a food hall and a brewery on site and ready to serve, we keep the community fed and coming back for seconds. Our food hall hosts 12 walk-up dining options, while reservable event spaces and karaoke rooms mean parties can break bread (and break into song) in a spot of their own, be it for work or play. No matter what you're here to share, time around the table always helps to start and end each day on a high note.

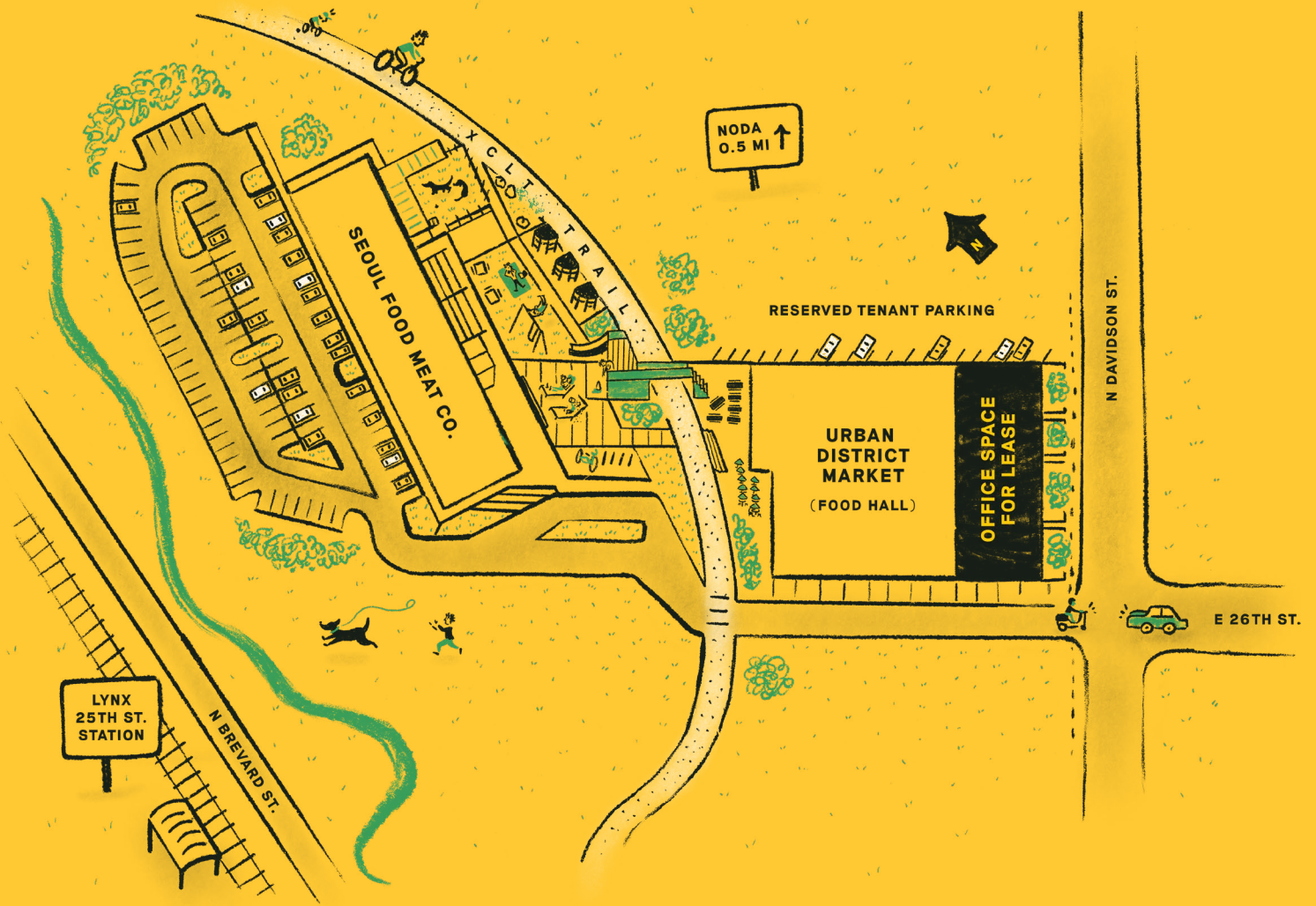


Swing by. Play awhile.

With the XCLT trail intersecting our own patch of four acres, we wouldn't be good neighbors if we didn't have everyone over. Tucked into Lintmen's community backyard, you'll find grain silos remade to provide a little shade and private seating, plenty of picnic tables and other open-air perches, plus a play area with swings and a splash pad for all. Always great, the outdoors are even better with our four-footed friends around. Come as you are—and bring the whole pack.



SITE PLAN



PLAN HIGHLIGHTS

PLENTY OF ROOM

±4 acre site with 10,000 sq. ft. office space for lease

ON THE XCLT

Situated on the XCLT with pedestrian bridge over the trail

EASY LYNX ACCESS

Short walk to the LYNX 25th St. Station

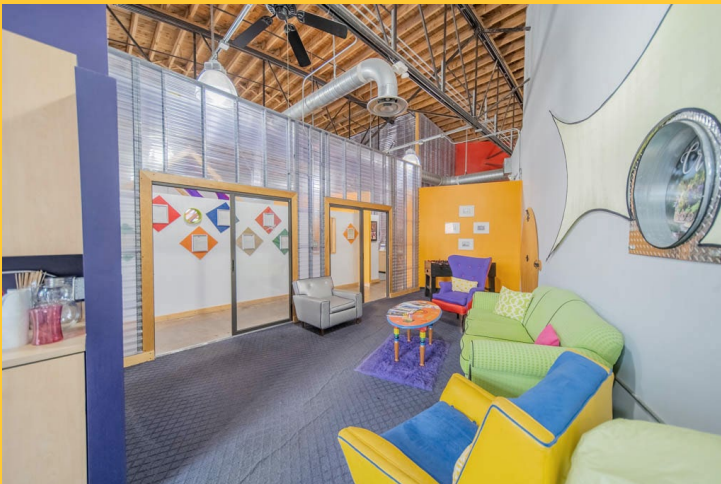
AMPLE PARKING

Lots of common parking and 19 reserved tenant spaces

FOOD & DRINK OPTIONS

Food Hall with 12 stalls, restaurant and brewery on site

**WORKSPACE
GALLERY**



2315 N Davidson St / Charlotte NC 28205 / lintmens.com / hi@lintmens.com
For leasing: Brooks Whiteside brooks@whitesidecre.com C 704 763 9855 / Bryn Knudson bryn@whitesidecre.com C 440 554 5458

PROPOSED ELEVATIONS



**EAST ELEVATION
FACING N. DAVIDSON OFFICE SPACE ENTRY**



**WEST ELEVATION
FOOD HALL**

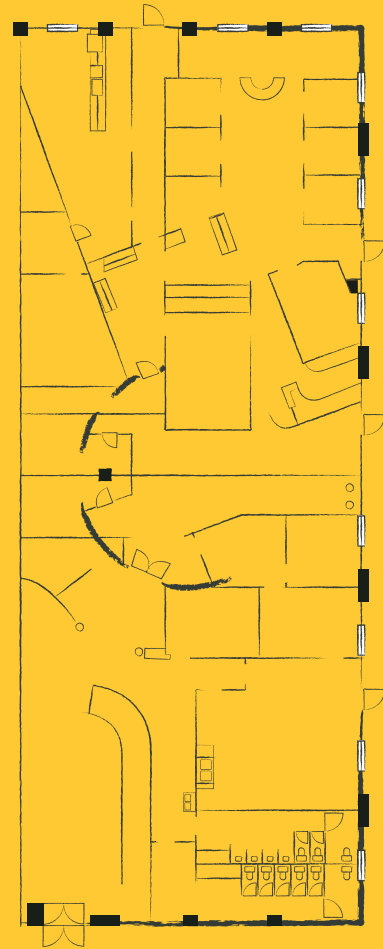


**SOUTH ELEVATION
FACING E. 26TH ST.**



**SOUTH ELEVATION
RESTAURANT, OVERLOOK & SILOS**

WORKSPACE FLOORPLAN



HIGHLIGHTS

- 10,000 sq. ft. of available office space with customizable floorplan
- Historic building with exposed brick and high bow truss ceilings
- Creative environment perfect for tech firms or design offices